



Call us on +44(0)845 3717626

[www.tcp.eu.com](http://www.tcp.eu.com)

[mail@tcp.eu.com](mailto:mail@tcp.eu.com)

# DPU 7060 Vibratory Plate

## Remote Controlled Compaction Plate

The Wacker DPU7060 Compaction Plate is suitable for deep trench, open cut and abutment fill. The plate will immediately go into idle running mode when the operator lets go of the remote control joysticks. The award-winning Wacker Neuson infrared remote control uses line of sight for added safety.



London and the Home Counties: 0845 3717626

South East & East Anglia: 01621 850777 South West Depot: 01884 266815

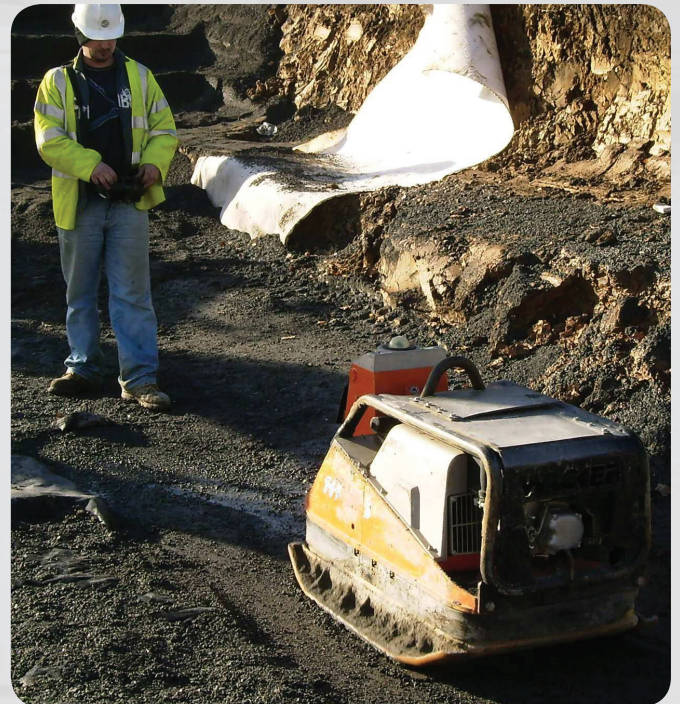
Midlands Depot: 02476 466966 North Depot: 01132 391297



# DPU 7060 Vibratory Plate

## Specifications

Remote Control	Infrared
Operating Widths	650 / 800mm
Operating Weight	604 / 629kg
Centrifugal force	Up to 6920kg
Output Kg/m <sup>2</sup> without vibration	1836 / 1496 kg/m <sup>2</sup>
Output Kg/m <sup>2</sup> with vibration	22012 / 17031 kg/m <sup>2</sup>
Machine height	996 mm
Base plate thickness	14mm
Frequency	56 HZ
Drive	Air-cooled single cylinder diesel engine
Engine Manufacturer	Faryman
Fuel consumption	1.4 L/h
Tank Capacity	7.5 L
Maneuverability	Turns on its own axis



*Ergonomic design and remote control operation makes compaction simple and straightforward.*

London and the Home Counties: 0845 3717626

South East & East Anglia: 01621 850777 South West Depot: 01884 266815

Midlands Depot: 02476 466966 North Depot: 01132 391297